

SUBMITTAL DATA

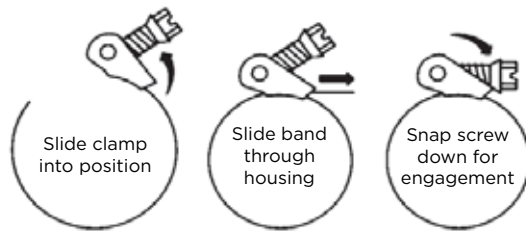
Flexmaster U.S.A.® Quick Release LS Series Clamp

Quick Release Stainless Steel Clamp



Clamp	Item #	Flex Size	Clamp Min.	Dia. Max.	Length
LS-88	40604	4	2.06	6.00	20"
LS-88	40604	5	2.06	6.00	20"
LS-104	40606	6	1.75	7.00	23"
LS-152	40608	8	2.00	10.00	32"
LS-152	40608	9	2.00	10.00	32"
LS-188	40610	10	2.06	12.31	40"
LS-232	40612	12	10.19	14.00	48"
LS-258	40614	14	10.00	16.00	52"
*LS-280	40616	16	14.25	18.00	58"
LS-312	10618	18	14.00	20.00	64"
LS-344	40620	20	16.00	22.00	73"

*Can only be used on stated size.



Easy On...Easy Off...in 3 Simple Steps!

Reverse procedure for quick release and removal.

No need to disassemble connection.

All materials used in the manufacture of the subject clamp are certified by our suppliers to meet our material specifications. The band is made from AISI 201 stainless steel. The housing is made from AISI 201 stainless steel. The screw is made of AISI 1018 carbon steel. The bridge is made from AISI 410 stainless steel neutral hardened and drawn.

Clamps meet the Maximum Concentration Values (MCV) requirements of the following material: European Directive 2002/95/EC also known as the ROHS Directive. Therefore the clamps are ROHS compliant.