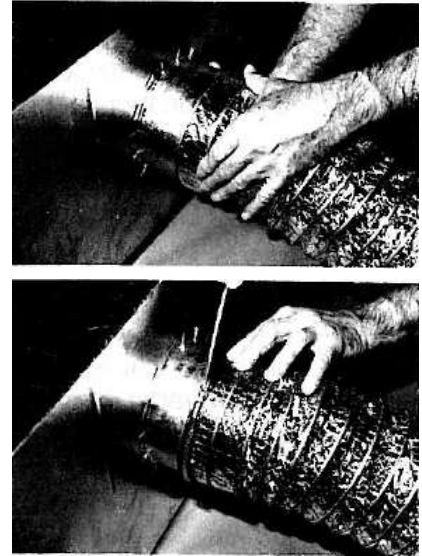


### Low Pressure Installation – Duct to Collar – Up to 3” W.G.

1. If duct is insulated, first peel back vapor barrier and insulation approximately 4” to expose core.
2. Slide core over collar.
3. Seal core to collar with two wraps of duct tape, then secure core with approved clamp.
4. For insulated duct, pull insulation and vapor barrier back into position.
5. Seal vapor barrier with two wraps of duct tape, or seal the vapor barrier with two wraps of duct tape and approved clamp.

FOR DUCT TO DUCT CONNECTIONS, SEE INSTRUCTION “A” ON REVERSE SIDE.



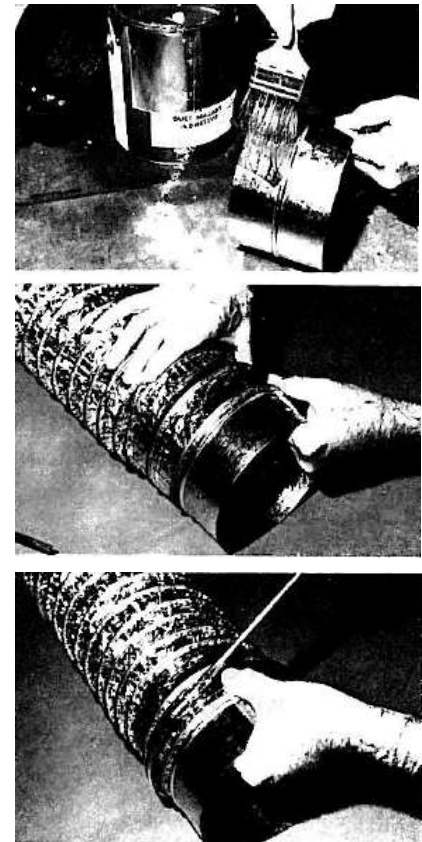
---

### High Pressure Installation – Duct to Collar – Over 3” W.G.

1. If duct is insulated, first peel back vapor barrier and insulation approximately 4” to expose core.
2. Apply approved duct sealer to inside of core and to outside of collar.
3. Slide core over collar and smooth out any surplus duct sealer.
4. Secure core with approve clamp.
5. For insulated duct, pull insulation and vapor barrier back into position.
6. Seal vapor barrier with two wraps of duct tape, or seal the vapor barrier with two wraps of duct tape and approved clamp.

#### Notes:

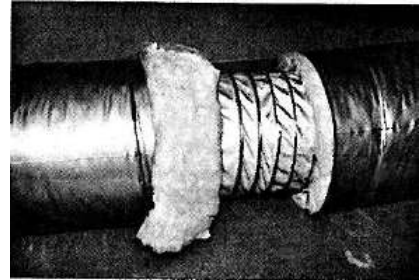
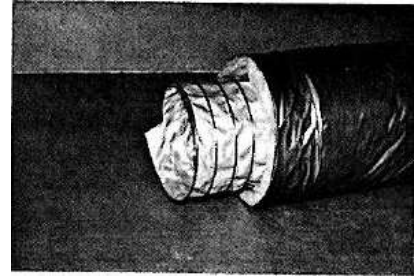
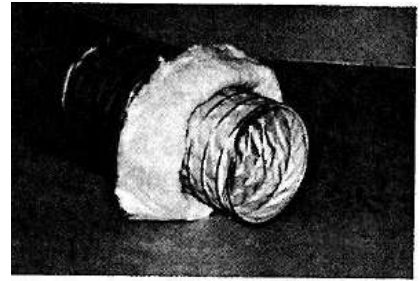
- Duct Tape – Use tapes listed and labeled in accordance with standard UL 181B and marked “181B-FX”.
- Non-metallic clamps shall be listed and labeled in accordance with standard UL 181B and marked “181B-C”. Use of non-metallic clamps shall be limited to 6” w.g. (1500 pa) positive pressure.
- Duct Sealer – Use mastics listed and labeled to standard UL 181B and marked “181B-M” on container (high pressure only).
- Use beaded sheet metal fittings and sleeves when using nonmetallic clamps



Air Connectors are limited to 14’ lengths.

### Low Pressure Installations – up to 3” W.G. - Splices

1. Trim end of duct so vapor barrier, insulation and core are flush. Trim fabric back to metal strip. Peel back vapor barrier and insulation 4” from end of core.
2. Trim second piece of duct. Peel vapor barrier only back 4”. Cut away exposed insulation, being careful not to cut either vapor barrier or core. Trim core material back to metal strip. Turn in end of metal approx. ¼” to prevent it snagging fabric.
3. Screw second core inside first three full turns. Check that helix of inside core tracks properly into helix of outside core without cross threading. Pull joint lengthwise to take up slack. If insulations will not butt together, screw in further until insulations butt.
4. Peel back vapor barrier and insulation again approx. 3” each side of joint. Tape core with two wraps of duct tape, each wrap overlapping previous wrap at least 25% and following natural path of duct helix.
5. Fold insulation and vapor barrier back over core joint. Tape barrier with two wraps of duct tape lapped approx. 25%.



#### Notes:

- Duct Tape – Use tapes listed and labeled in accordance with standard UL 181B and marked “181B-FX”.
- Non-metallic clamps shall be listed and labeled in accordance with standard UL 181B and marked “181B-C”. Use of non-metallic clamps shall be limited to 6” w.g. (1500 pa) positive pressure.
- Duct Sealer – Use mastics listed and labeled to standard UL 181B and marked “181B-M” on container (high pressure only).
- Use beaded sheet metal fittings and sleeves when using nonmetallic clamps

Air Connectors are limited to 14’ lengths.